

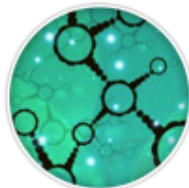
From Live cell imaging to Electron microscopy – Advanced correlative light to electron microscopy workshop



11 – 14 January 2016 OR 8 – 11 February 2016



Société Française
des Microscopies



FRANCE-BIOIMAGING

Correlative Light and Electron Microscopy (CLEM) takes an increasing place in scientific investigation. In our workshop, we propose hands-on training using our innovative protocol, centered around the CryoCapsule® and our newly developed software eC-CLEM®. Practical sessions will include cell culture on the CryoCapsule® and live cell imaging, High Pressure Freezing (HPM100 and HPM Light μ), Freeze Substitution to preserve fluorescence, serial sectioning, fluorescence on section, electron microscopy and image registration.

It is firstly intended to scientists with advanced expertise in light microscopy **and/or** electron microscopy.

2 sessions of 4 people each will be organized to ensure that each participant gets the chance to practice.

Evening discussions include presentation by each participant to have a change to discuss their own CLEM projects.

A practical manual will be provided, covering all the steps of the method.

Speaker and teachers: Xavier Heiligenstein, Ilse Hurbain, Claire Boulogne, Lucie Sengmanivong, Graca Raposo

Contact & registration: xavier.heiligenstein@curie.fr

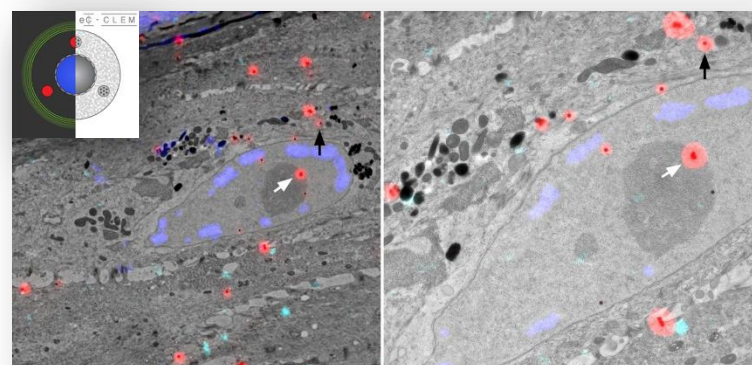
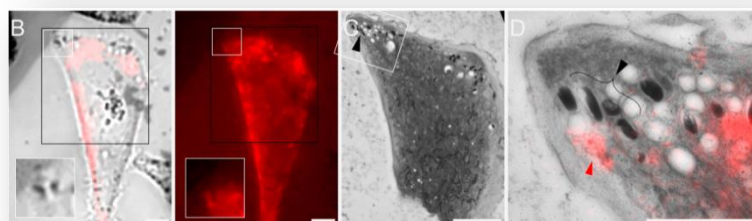
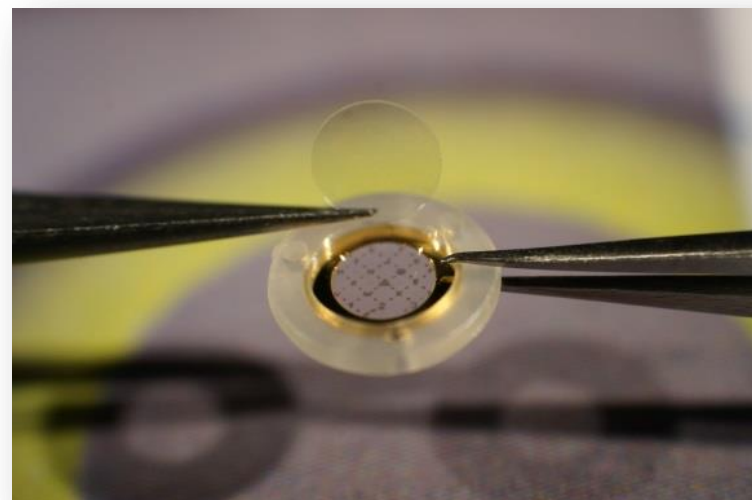
The course fee of 380€ includes all the material, reagents, disposable etc. The traveling and housing expenses are not included. The language course will be French or English depending on the participants.

Participants are expected to provide a brief motivation letter (1 small page explaining the scientific project). The maximum number of participants is 4 per session. 8 in total.

Available equipment: Nikon Te2000U, Leica HPM100, CryoCapCell HPM Light μ , Leica AFS-2, Reichert Ultracut S & UCT, Leica UC6 & UC7, Philips CM120, FEI Tecnai spirit.

Topics:

- CryoCapsule
- Live cell CLEM
- High Pressure Freezing
- Serial sectioning
- Section CLEM
- Registration



Industrial partners

